



**P**rotect GDB10 PLUS is an innovative universal barrier membrane for protection against gas and damp penetration from the ground.

## PROTECT GDB10 PLUS GAS PROTECTION MEMBRANE

Protect GDB10 PLUS provides protection against:

- Methane
- Radon
- Carbon dioxide
- Hydrocarbons
- Damp

### BENEFITS

- Provides a continuous, impermeable protective barrier against gases from the ground and damp penetration.
- Fast to install: easy to cut, lightweight and clean to handle.
- Easy to form corners on site.
- Permeation tested to BS ISO 15105-1 for methane transmission including joint overlaps.
- Tough, durable, and best in class for tensile strength and puncture resistance.
- Only one tape required to seal lap joints to enable speedy robust installation.
- No additional damp proof barrier needed.
- A comprehensive range of preformed accessories available to enable a simpler and more reliable installation.

### PROTECT GDB10 PLUS

- BS 8485: 2015 compliant.
- Suitable for use in Amber 1 & Amber 2 situations.
- Tested to BS ISO 15105-1 for methane transmission including joint overlaps.

**Performance**

Protect GDB10 PLUS fully complies with BS 8485: 2015, CIRIA C665/C735 and the NHBC Traffic Lights when installed as prescribed in BRE 414. It is also BM TRADA approved.

The membrane is suitable for use in both Amber 1 and Amber 2 areas and provides protection against radon, methane, carbon dioxide, hydrocarbons and damp. It has been permeation tested to BS ISO 15105-1 for methane transmission including joint overlaps.

**Sizes**

Roll length: 40m.  
 Roll widths (m): 3.0, 1.0, 0.6 and 0.45.  
 Roll weights (kg): 24.3, 8.1, 4.86 and 3.65.

**Technical support**

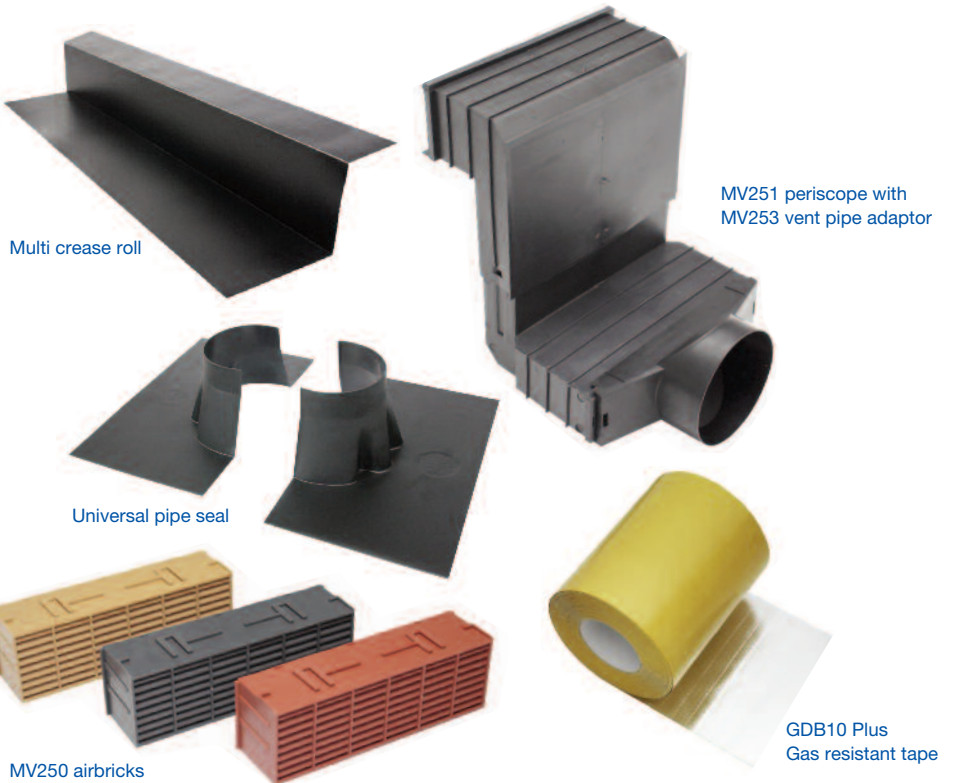
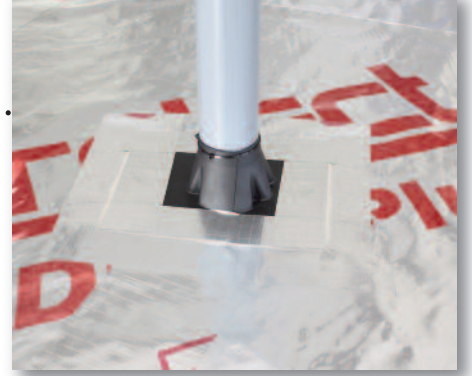
We can work with you at an early stage of the build to ensure that the correct protective measures are identified and implemented.

Glidevale's technical team is able to provide and support you with:

- Full plan take off and quotation service.
- Technical advice line.
- On site support including tool box talks.
- CPD seminars.
- CAD detailing.
- Product installation guidance.

**Accessories**

Glidevale offers a comprehensive range of accessories, including preformed units, to ensure reliable and continuous protection across wall cavities and in awkward spaces.



<b>Performance and test methods: Protect GDB10 PLUS</b>	<b>MD (along roll)</b>	<b>CD (across roll)</b>
Unaged nail tear strength (N) to BS EN 12310-1 modified	246	227
Unaged tensile strength (N/50mm) to BS EN 12311-1 modified	875	825
Elongation (%) to BS EN 12311-1 modified	15	15
CBR puncture resistance (N) to BS EN ISO 12236	1894	
Sheet methane permeability to BS ISO 15105-1	< 0.3ml/m <sup>2</sup> /24hrs@1atm	
Joint methane resistance permeability to BS ISO 15105-1	3.56ml/m <sup>2</sup> /24hrs@1atm	
Carbon dioxide (CO <sub>2</sub> ) permeability to BS EN 374-3	< 1.0 µg/(cm <sup>2</sup> .min)	
Radon permeability	4.2 x 10 <sup>-12</sup> m <sup>2</sup> /s	
Radon transmittance	21 x 10 <sup>-9</sup> m/s	
Basis weight (g/m <sup>2</sup> )	195	
Water penetration resistance to BS EN 1928, Method A modified	Pass Class W1	

**Stockist's stamp**

**GLIDEVALE**

2 Brooklands Road, Sale, Cheshire M33 3SS  
 Tel: 0161 905 5700 Fax: 0161 905 2085  
 Email: info@glidevale.com Web: www.glidevale.com

Glidevale maintains a policy of continuous development and reserves the right to amend product specifications without notice.



A division of Building Product Design Ltd. Company Registration No: 3944123

